

30. Project Protection

This chapter explains the settings relevant to project protection.

30.1. Overview.....	30-2
30.2. EXOB/CXOB Password.....	30-2
30.3. Decompilation is Prohibited	30-3
30.4. Disable HMI Upload Function.....	30-3
30.5. Project Key.....	30-3
30.6. MTP File Password	30-4

30.1. Overview

EasyBuilder Pro provides a number of features to protect a project file.

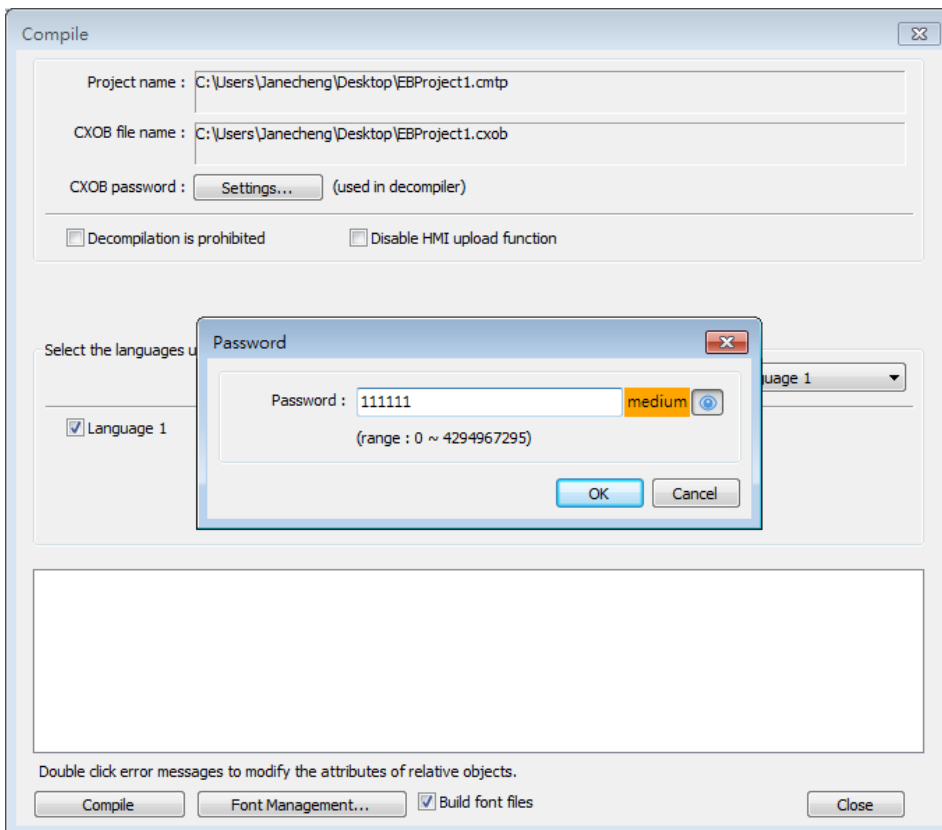
Note

- The protected projects cannot be decrypted by the factory since they are encrypted by users; therefore, please remember your password.

30.2. EXOB/CXOB Password

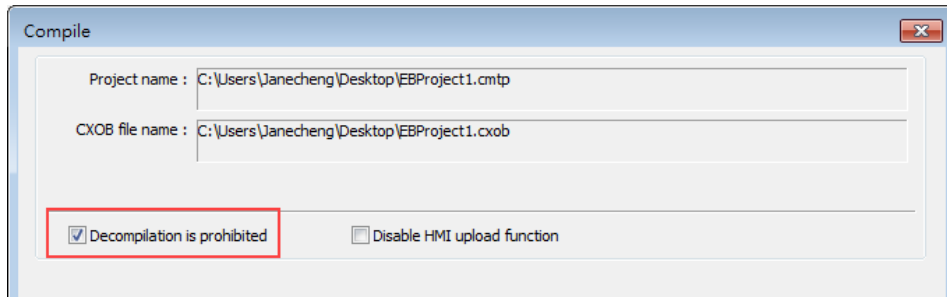
After editing a project (.emtp/.cmt), users can compile the project to .exob/.cxob format. The .exob/.cxob file can be downloaded to HMI. Password can be set to protect the .exob/.cxob file in [EXOB/CXOB password] when compiling. (Password range: 0 ~ 4294967295)

A password is needed when attempting to decompile the .exob/.cxob file back to .emtp/.cmt file. If the password is entered incorrectly for three times, please restart EasyBuilder Pro.



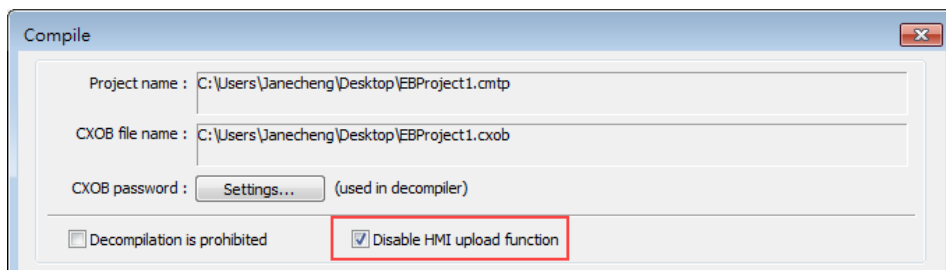
30.3. Decompile is Prohibited

After a project (.emtp/.cmtp) is edited, users can compile the project to .exob/.cxob format. The .exob/.cxob file can be downloaded to HMI. If [Decompilation is prohibited] check box is selected when compiling, the setting in [EXOB/CXOB password] will be ignored. Furthermore, the .exob/.cxob file cannot be decompiled to .emtp/.cmtp file.



30.4. Disable HMI Upload Function

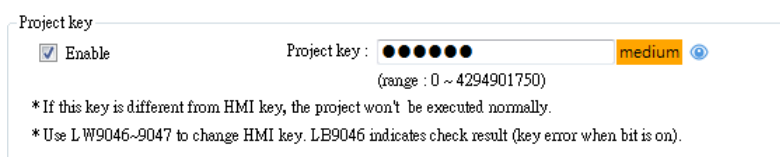
EasyBuilder Pro provides a system reserved register [LB-9033]. When this register is set ON, the .exob/.cxob file cannot be uploaded. When attempting to upload an .exob/.cxob file with this register set ON, the file obtained after uploading is 0 byte, and cannot be decompiled. Please reboot HMI for the changed setting to take effect.



30.5. Project Key

Projects can be restricted to run on a specific HMI.

The setting is in [System Parameters] » [General] » [Project key].



Enable and set the [Project key] (password range: 0 ~ 4294901750). System registers LW-9046 ~ LW-9047 (32-bit) can be used to set the [HMI key] for HMI. The values in LW-9046 and

LW-9047 cannot be accessed by a remote device. The .exob/.cxob file obtained after compiling can only be executed on HMI when [HMI key] and [Project key] match. If the keys don't match, LB-9046 is set ON. To change [HMI key], please reboot HMI.

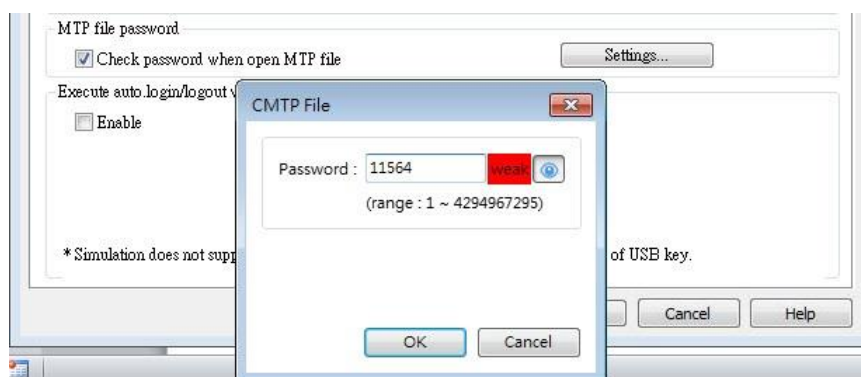
Note

- When **[HMI key]** and **[Project key]** don't match, HMI and PLC cannot communicate.
- ↓ Click the icon to download the demo project. Please confirm your internet connection.

30.6. MTP File Password

After a project (.emtp/.cmtp) is edited, a password can be set to protect the .emtp/.cmtp file. In [System Parameters] » [Security] tab, enable [Project password] and click [Settings] (password range: 1 ~ 4294967295).

The password will be needed when attempting to open the .emtp/.cmtp file.



Note

- When using “Window Copy” function, if the source file is protected by MTP password, please enter the correct password for the system to execute window copy.